



Concrete Masonry Association of California and Nevada

Summer 2022  
Design Awards Edition

# CMU Profiles in Architecture

Oceanside Beachfront Improvements  
Tyson Street  
Safdie Rabines Architects  
Photo by Safdie Rabines Architects



## 2022 Concrete Masonry Design Awards

Text includes excerpts from  
each architectural firm's  
description of the project  
and jury comments delivered  
by Jury Chairperson, Ben  
Kasdan, AIA, LEED® AP.

*Why Masonry?*  
[www.whymasonry.org](http://www.whymasonry.org)

Desert Palisades  
Woods + Dangaran  
Photo by Joe Fletcher

The Concrete Masonry Design Awards Are Co-Sponsored by AIA California



**ARCHITECT:**  
**Safdie Rabines Architects**  
925 Fort Stockton Drive  
San Diego, CA 92103

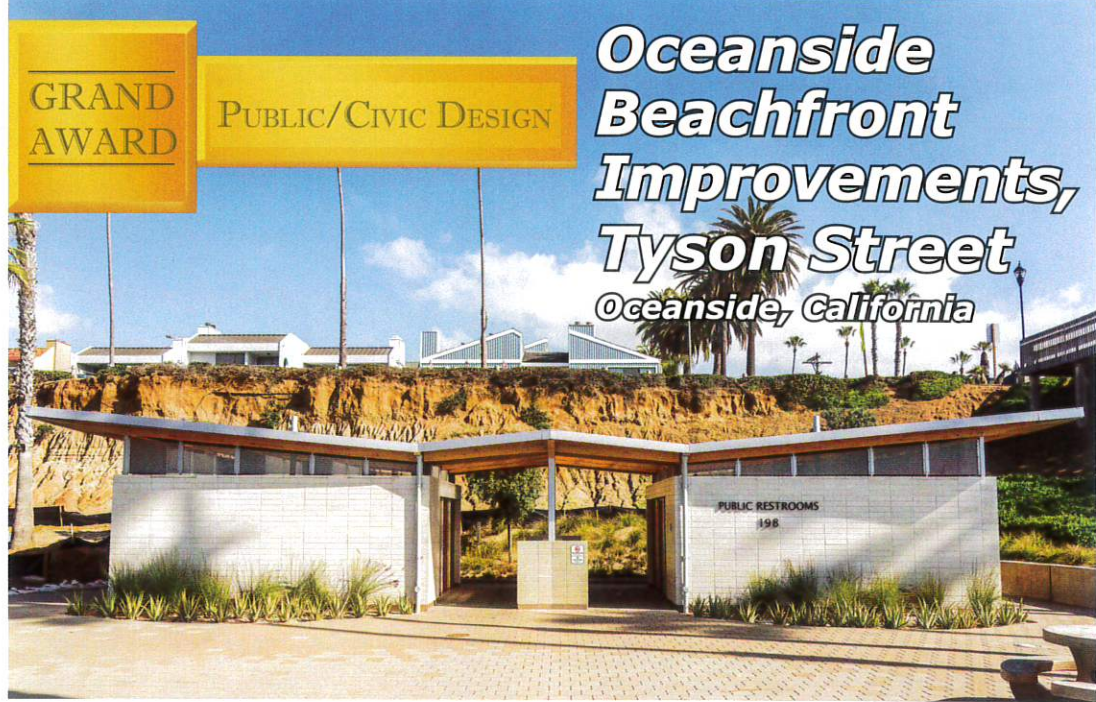
Taal Safdie, AIA, NCARB  
**Principal-in-Charge**

**STRUCTURAL ENGINEER:**  
Cottrell Engineering  
**GENERAL CONTRACTOR:**  
Bilbro Construction Company  
**MASONRY CONTRACTOR:**  
Haxton Masonry Inc.  
**BLOCK PRODUCER:**  
ORCO Block & Hardscape  
**OWNER:**  
City of Oceanside  
**©PHOTOGRAPHY:**  
Safdie Rabines Architects

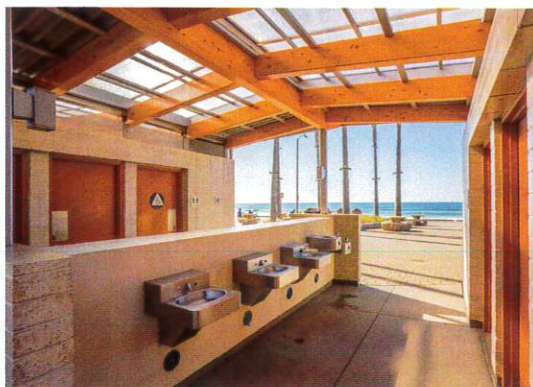
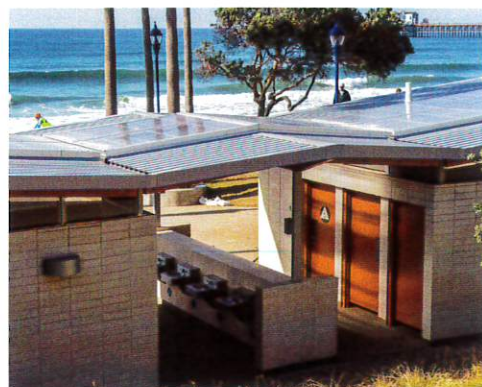
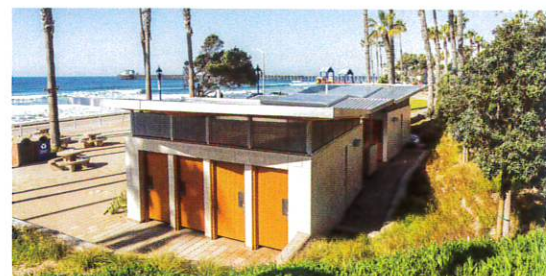
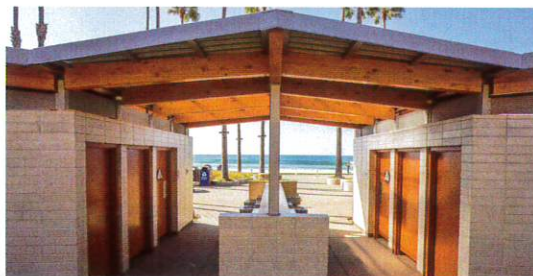
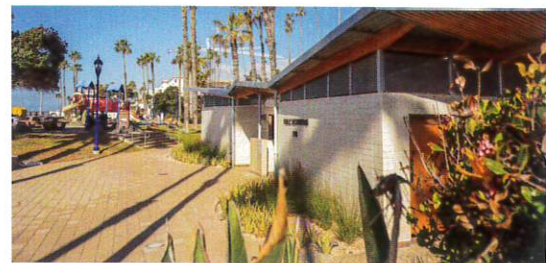
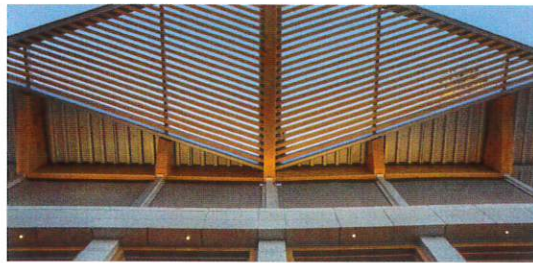
GRAND  
AWARD

PUBLIC/CIVIC DESIGN

# Oceanside Beachfront Improvements, Tyson Street Oceanside, California



**Jury Comments:** *The Oceanside Beachfront Improvements - Tyson Street project demonstrates the power of design regardless of scale or use. The elegantly-detailed small building creates an elevated experience for beachgoers in the form of a public restroom. A lot of public restrooms are dark and unpleasant, but the design for this one is overwhelmingly welcoming with its soaring roofline and the abundance of natural light and air.*



**ARCHITECT'S COMMENTARY:** Located south of the pier along the Oceanside Strand, the Tyson Street Beachfront Improvement project revitalizes an outdated public restroom and the surrounding area to support the neighboring public park and the growing traffic around Oceanside's downtown beach area. Carefully planted vegetation supports the facility as well as permeable pavers that wrap around the building creating

a wave-like pattern and multiple pathways throughout the site reminiscent of the nearby ocean.

**WHY MASONRY?** White precision concrete masonry units (CMUs) were selected to contrast beautifully with the tan hillside bluffs behind and the vibrant blue ocean in front of the facilities. In addition, the CMUs provide for security, cost-effective durability, ease of maintenance, and resistance to vandalism and other forms of mischief. The modernized restrooms also utilize durable CMUs to withstand the weathering and salinity of its oceanfront site. The rest of the structure is constructed of glulam beams with a spanned roof of steel and sheet metal.

